

Operator name and signature: Rolf Ugilt Rolf Ugilt

Output:	4116 lm
Peak:	1763 cd
Lux@50cm:	7053 Lux
Power:	32,5 W
Power Factor / DF ϕ 1:	0,6
Standby power	0,25 W

Light efficacy:

127 Lumen/Watt

Light quality:

CRI: 83,2

Color temperature:

6165 K



According to regulation (EU) 2019/2015

Directionality:	Directional
Useful Lumen:	4103 lm
η TM - Efficacy	149 lm/W
Energy Class:	D

Product name:

NOVA 4 Connect

Item number:

03.6101C

Date and time:

09-03-2022 14:24:33

Description:

Standby Power: 0,25W

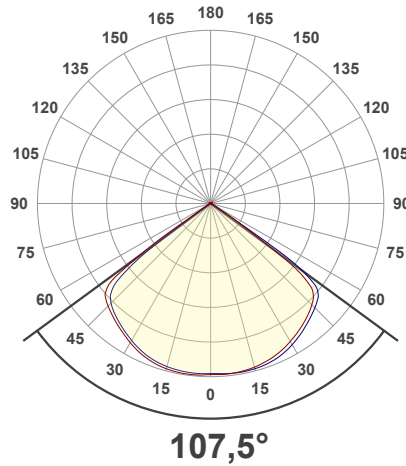
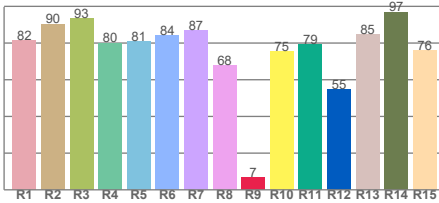
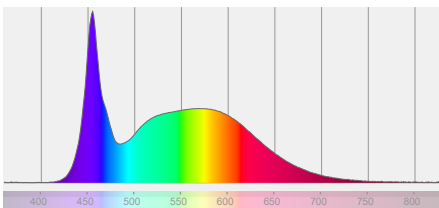
Sensor distance: 350 cm

Warmup: <2% in 15 Minutes

Power Supply: CAS PSU

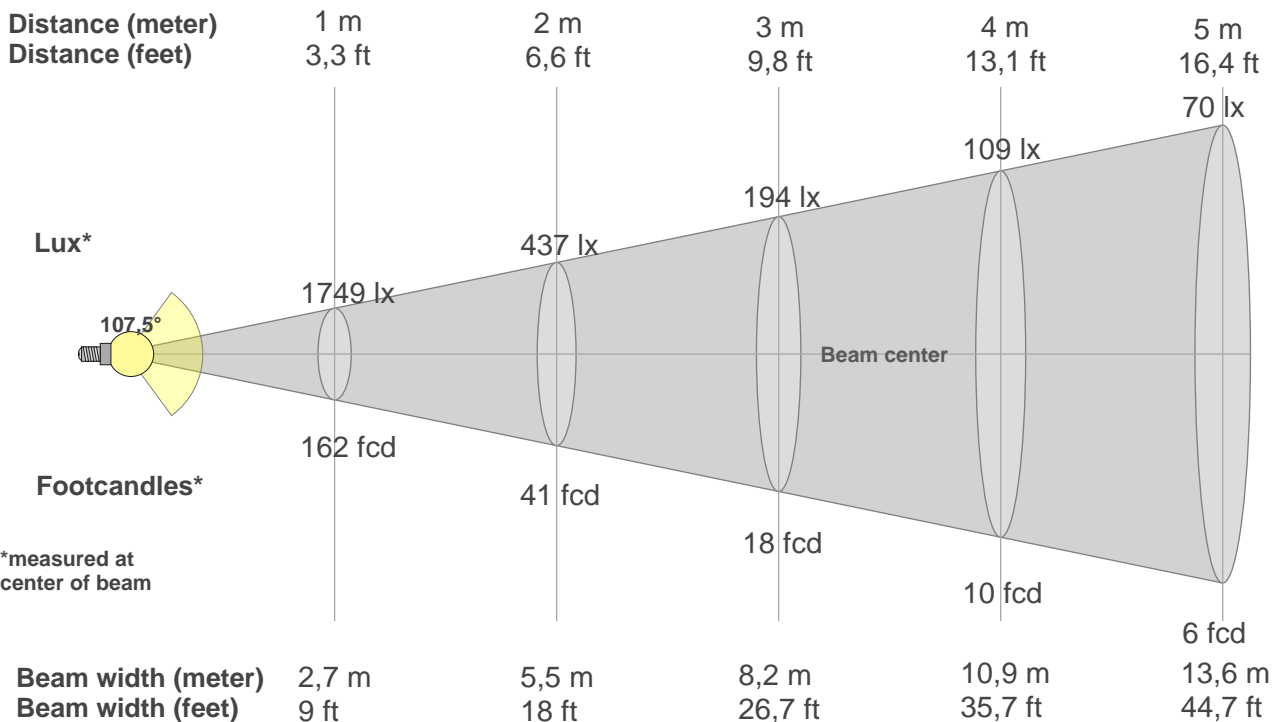
FW: V6.9

Spectra



BEAM DETAILS

Beam distance: 83,6 meters



*measured at center of beam

Beam intensities from 1-20m

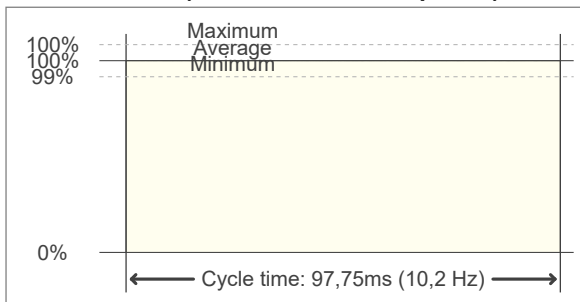
1m	2m	3m	4m	5m	6m	7m	8m	9m	10m	11m	12m	13m	14m	15m	16m	17m	18m	19m	20m
3,3ft	6,6ft	9,8ft	13,1ft	16,4ft	19,7ft	23ft	26,2ft	29,5ft	32,8ft	36,1ft	39,4ft	42,7ft	45,9ft	49,2ft	52,5ft	55,8ft	59,1ft	62,3ft	65,6ft
1749lx	437lx	194lx	109lx	70lx	49lx	36lx	27lx	22lx	17lx	14lx	12lx	10lx	9lx	8lx	7lx	6lx	5lx	5lx	4lx
162,5fcd	40,6fcd	18,1fcd	10,2fcd	6,5fcd	4,5fcd	3,3fcd	2,5fcd	2fcd	1,6fcd	1,3fcd	1,1fcd	1fcd	0,8fcd	0,7fcd	0,6fcd	0,6fcd	0,5fcd	0,5fcd	0,4fcd

FLICKER DETAILS

Flicker curve (complete sampled flicker signal)



Flicker frame (frame of one flicker period)



Flicker frequency:	10,23 Hz
Flicker index:	0
Flicker percentage:	0,04 %
SVM: (Visual flicker)	0
Pst LM:	0,02
SDCM	5,9
Rated Color Temperature	6000 K
Duv	0,0006
CIE Coordinates (x, y)	0,319, 0,336
CIE Coordinates (u, v)	0,199, 0,315

WARMUP DETAILS according to EN 13032-1

